



Rockmount Road, SE19 | Offers Over £425,000

020 8702 9333
crystalpalace@pedderproperty.com





In General

- Two bedroom first floor conversion
- A share of the freehold
- Kitchen / diner
- Neutrally decorated
- Sought after location
- Fitted bedroom storage
- Close to central Crystal Palace

In Detail

A neat two bedroom first floor Victorian conversion within close proximity to central Crystal Palace and parkland.

This freshly decorated property offers a perfect blank canvas for a new owner to personalise and immediately enjoy, whilst the arrangement of space includes well proportioned rooms and plenty of natural light. Highlights include a kitchen / diner with ample work and storage space (with integrated appliances), and provides an area to entertain and enjoy a meal away from the main living room. The larger bedroom extends to 15ft and includes a feature fireplace and fitted storage. The second bedroom can also accommodate a double bedroom and would work well as a home working office / occasional guest room. The reception room is well proportioned and boasts a sunny south-easterly aspect. Other points to note include sash windows throughout and a share of the freehold.

Rockmount Road is primarily served by Gipsy Hill rail links and the over ground line to East and central London from Crystal Palace. Bus routes along Central Hill (at the top of the road) also connect to Brixton tube, whilst a number of bars, restaurants, and shopping options are easily accessed at the bustling Triangle. For joggers or dog walkers, there is a large green (with two new tennis courts) at the end of the street.

EPC: D | Council Tax Band: C | Lease: 999 years remaining | SC: As and when | GR: Nil | BI: £630

1

2

3

4

5

6

7

8

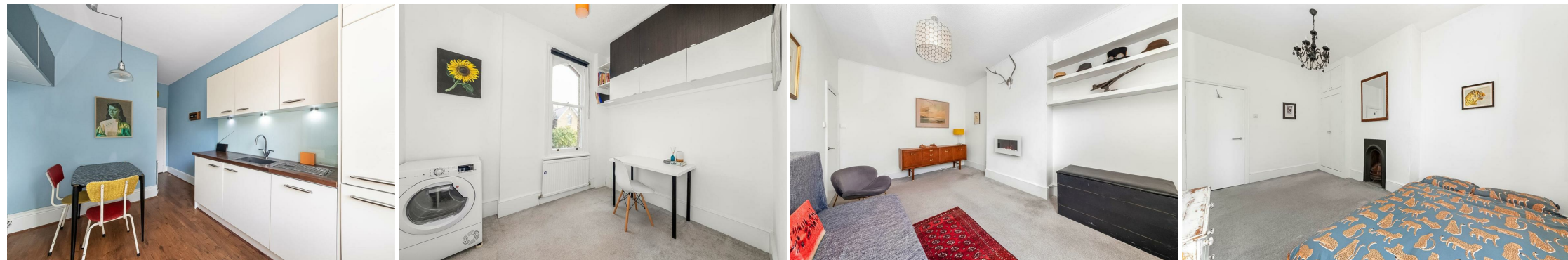
9

10

11

12

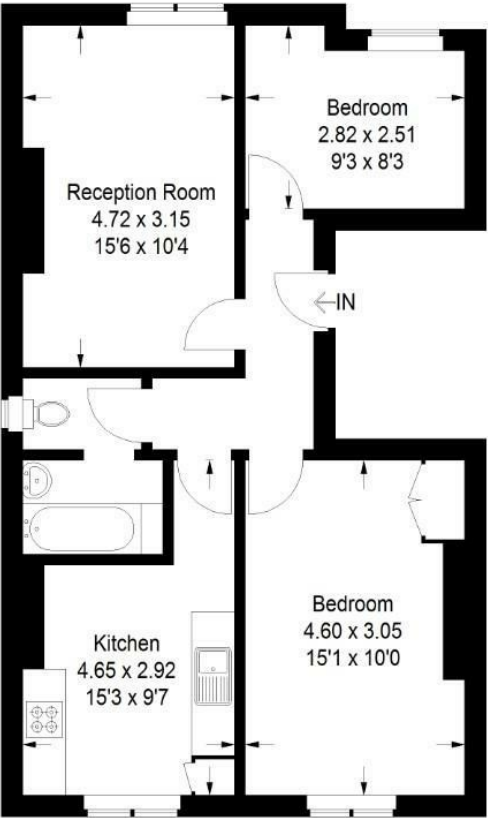
13



Floorplan

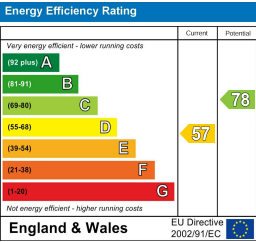
Rockmount Road, SE19

Approximate Gross Internal Area
57.9 sq m / 623 sq ft



First Floor

Copyright www.pedderproperty.com © 2025
These plans are for representation purposes only as defined by RICS - Code of Measuring Practice. Not drawn to Scale. Windows and door openings are approximate. Please check all dimensions, shapes and compass bearings before making any decisions reliant upon them.



Pedder Property Ltd trading as Pedder for themselves and for the vendor/landlord of this property whose agents they are, give notice that (1) these particulars do not constitute any part of an offer or contract, (2) all statements contained within these particulars are made without responsibility on the part of Pedder or the vendor/landlord, (3) whilst made in good faith, none of the statements contained within these particulars are to be relied upon as a statement of representation or fact, (4) any intending purchaser/tenant must satisfy him/herself by inspection or otherwise as to the correctness of each of the statements contained within these particulars, (5) the vendor/landlord does not make or give either Pedder or any person in their employment any authority to make or give representation or warranty whatsoever in relation to this property.